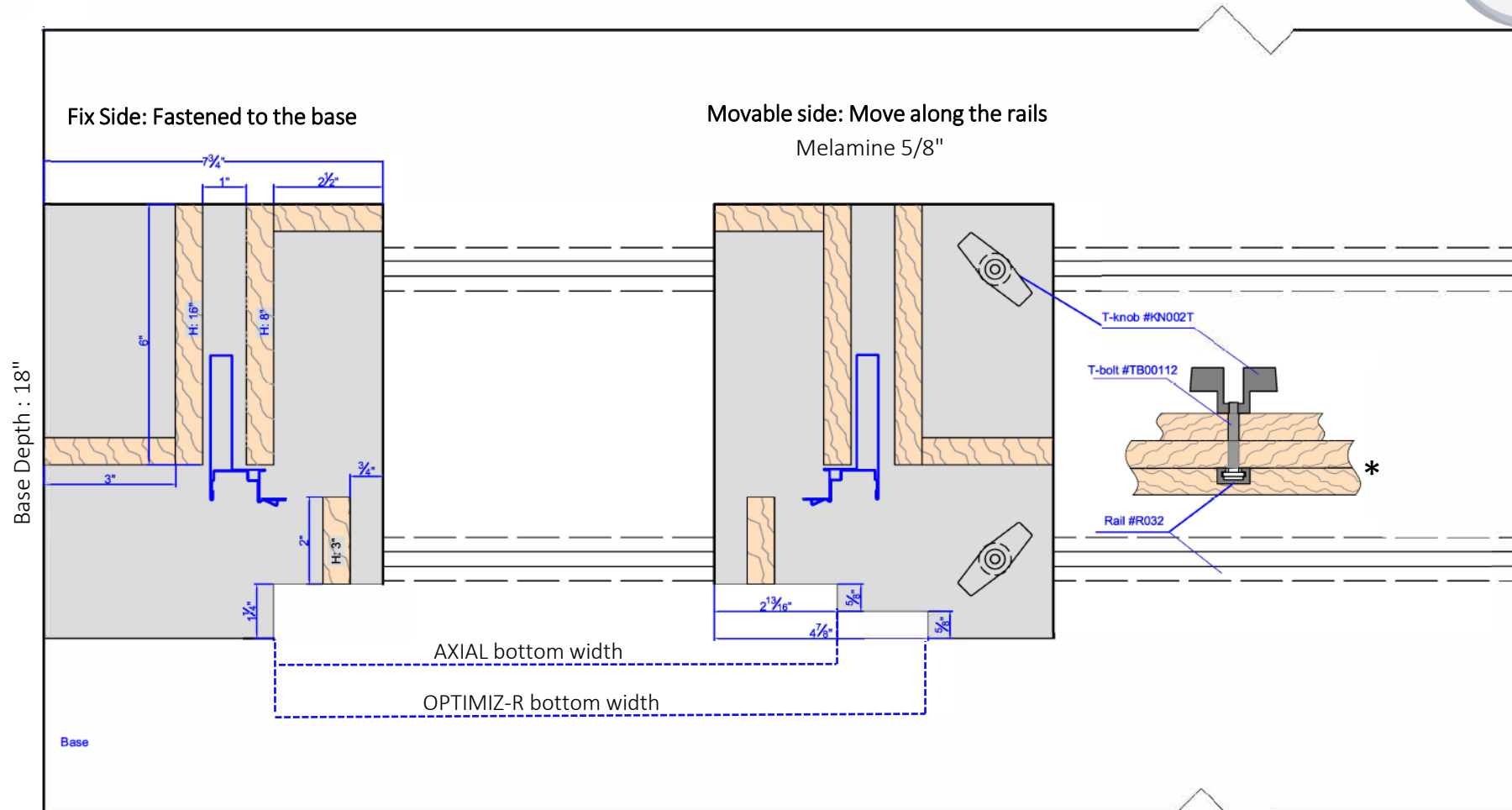




ASSEMBLY JIG



QUICK AND SIMPLE



Base Width: Min. 54" for a 48" cabinet

What you need:

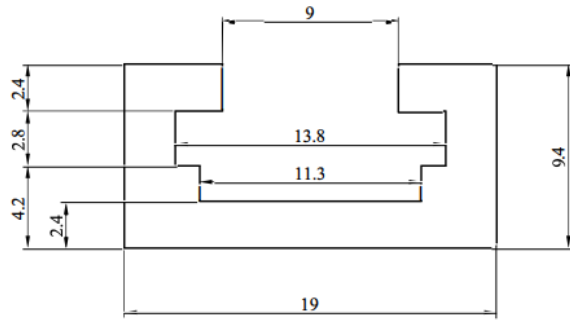
- 5/8" Melamine sheets
- 2x T-bolts #TB00112
- 2x T-knobs # KN002T
- 2x T-Track Rails #R032



***For the base:**
2 layers of 5/8" melamine to install the rails.

T-TRACK RAIL

#R032

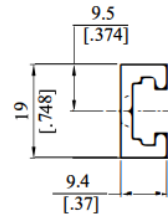


SCALE 4:1

EXPOSED SURFACE

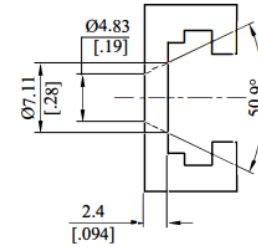
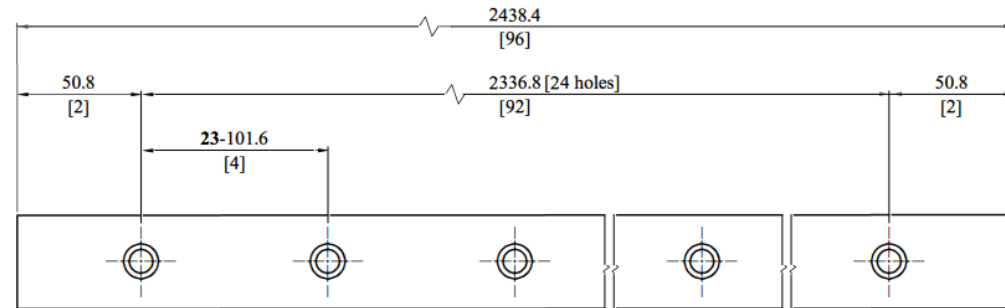
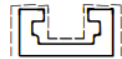


SCALE 1:1



Alu Profile's
Code: QL032
Alloy: 6063T5

EXPOSED SURFACE





ASSEMBLY JIG



QUICK AND SIMPLE

