

LD 8112 BLACK PROFILE

Installation: Recessed-mount

- Lowered Beam Angle
- Glare-free light
- Black anodized aluminum profile
- Thermoplastic end caps
- Black cover
- 0.16in (4mm) 3000K or 4000K LED strip
- Dimmable (depending on the driver)
- Push-fit installation
- Protection Class III



Art. No.	Light Color	Wattage	Length inch (mm)	Cable Length inch (mm)	Suits shelves inch (mm)
811209512290	3000K	1W	3.74 (95)	5.91 (150)	12 – --
811212012290	3000K	2W	4.72 (120)	7.87 (200)	13 – 17
811224512290	3000K	3,9W	9.65 (245)	9.84 (250)	18 – 23
811239512290	3000K	6,8W	15.55 (395)	9.84 (250)	24 – 29
811254512290	3000K	9,6W	21.45 (545)	9.84 (250)	30 – 35
811269512290	3000K	12,5W	27.36 (695)	9.84 (250)	36 – --
811209512490	4000K	1W	3.74 (95)	5.91 (150)	12 – --
811212012490	4000K	2W	4.72 (120)	7.87 (200)	13 – 17
811224512490	4000K	3,9W	9.65 (245)	9.84 (250)	18 – 23
811239512490	4000K	6,8W	15.55 (395)	9.84 (250)	24 – 29
811254512490	4000K	9,6W	21.45 (545)	9.84 (250)	30 – 35
811269512490	4000K	12,5W	27.36 (695)	9.84 (250)	36 – --

Installation with VARIO Power Conductor System

Standard Version:

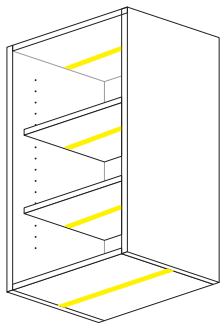
- VARIO track on the left side
- Cable outlet left
- Beam angle inside the closet/cabinet

Caution!

If VARIO track installed on the right side:

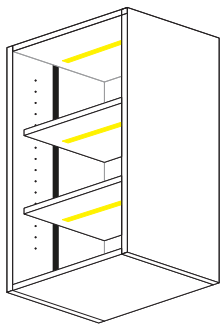
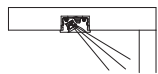
- Light must be rotated
- Beam angle outside the closet/cabinet (see last sketches)

Placement



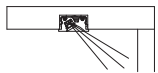
Horizontal

UNDERBODY INSTALLATION



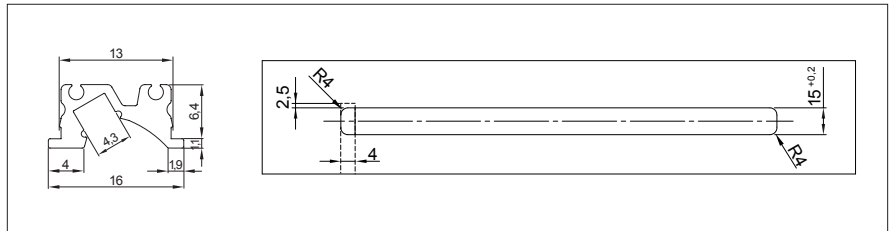
INSTALLATION WITH VARIO ELECTRICAL TRACK

Standard version:
Cable outlet left =
Vario track on the
left side of the
cabinet

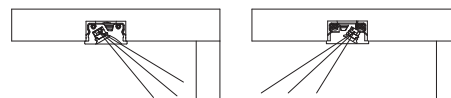
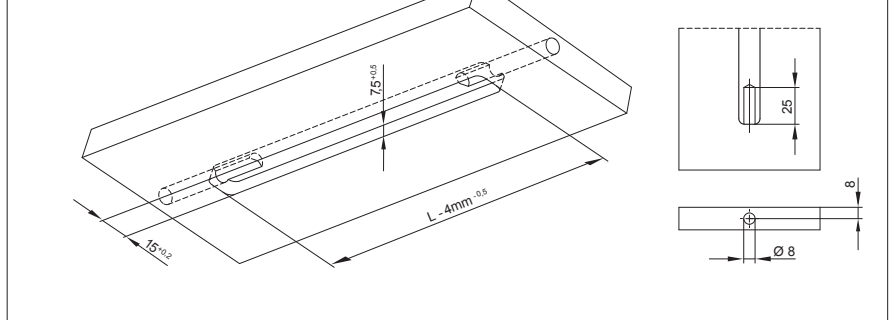


Installation Layout

Product installation must be done in accordance with local electrical codes, please confirm with an electrician or inspection office. Installation see Assembly instruction.



Milling Dimensions (lateral cable outlet)



Beam angles inside (Standard version) or outside the closet/cabinet