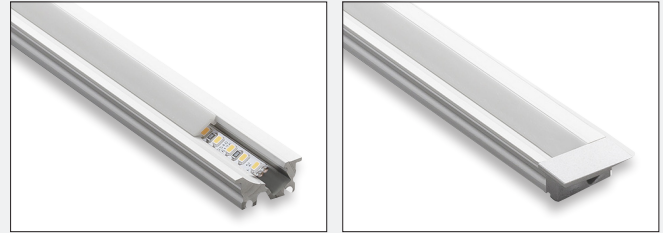


LD 8112 NATURAL ALUMINIUM PROFILE

Installation: Recessed-mount

- Lowered Beam Angle
- Glare-free light
- Natural aluminum profile
- Thermoplastic end caps
- Opal white cover
- 0.16in (4mm) 3000K or 4000K LED strip
- Dimmable (depending on the driver)
- Push-fit installation
- Protection Class III



Art. No.	Light Color	Wattage	Length inch (mm)	Cable Length inch (mm)	Suits shelves inch (mm)
8112095122010	3000K	1W	3.74 (95)	5.91 (150)	12 – --
8112120122010	3000K	2W	4.72 (120)	7.87 (200)	13 – 17
8112245122010	3000K	3,9W	9.65 (245)	9.84 (250)	18 – 23
8112395122010	3000K	6,8W	15.55 (395)	9.84 (250)	24 – 29
8112545122010	3000K	9,6W	21.45 (545)	9.84 (250)	30 – 35
8112695122010	3000K	12,5W	27.36 (695)	9.84 (250)	36 – --
8112095124010	4000K	1W	3.74 (95)	5.91 (150)	12 – --
8112120124010	4000K	2W	4.72 (120)	7.87 (200)	13 – 17
8112245124010	4000K	3,9W	9.65 (245)	9.84 (250)	18 – 23
8112395124010	4000K	6,8W	15.55 (395)	9.84 (250)	24 – 29
8112545124010	4000K	9,6W	21.45 (545)	9.84 (250)	30 – 35
8112695124010	4000K	12,5W	27.36 (695)	9.84 (250)	36 – --

Installation with VARIO Power Conductor System

Standard Version:

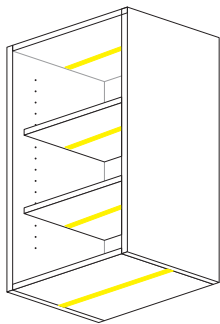
- VARIO track on the left side
- Cable outlet left
- Beam angle inside the closet/cabinet

Caution!

If VARIO track installed on the right side:

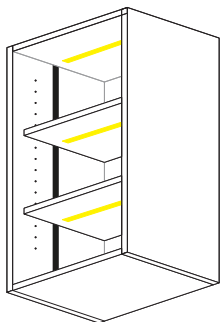
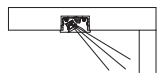
- Light must be rotated
- Beam angle outside the closet/cabinet (see last sketches)

Placement



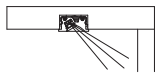
Horizontal

UNDERBODY INSTALLATION



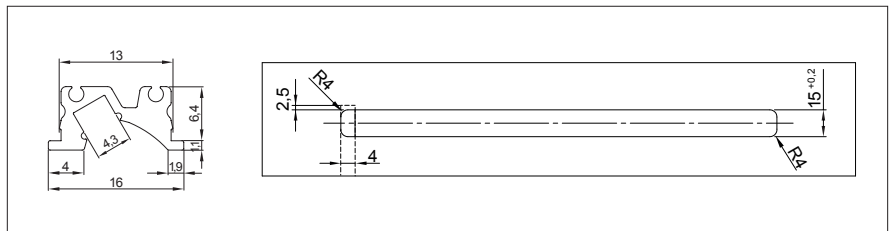
INSTALLATION WITH VARIO ELECTRICAL TRACK

Standard version:
Cable outlet left =
Vario track on the
left side of the
cabinet

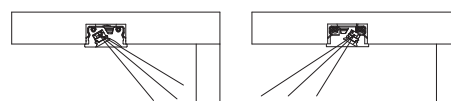
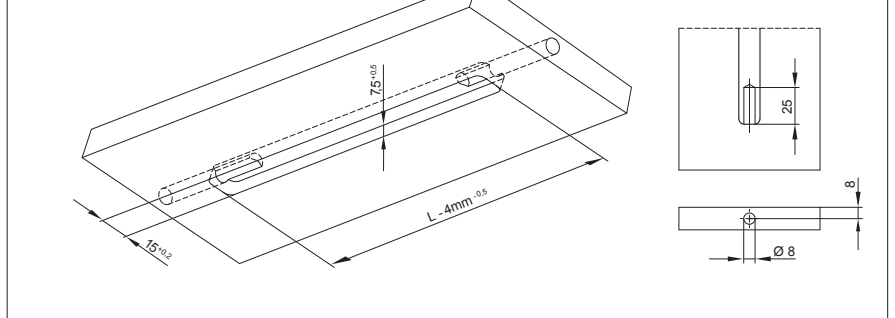


Installation Layout

Product installation must be done in accordance with local electrical codes, please confirm with an electrician or inspection office. Installation see Assembly instruction.



Milling Dimensions (lateral cable outlet)



Beam angles inside (Standard version)
or outside the closet/cabinet