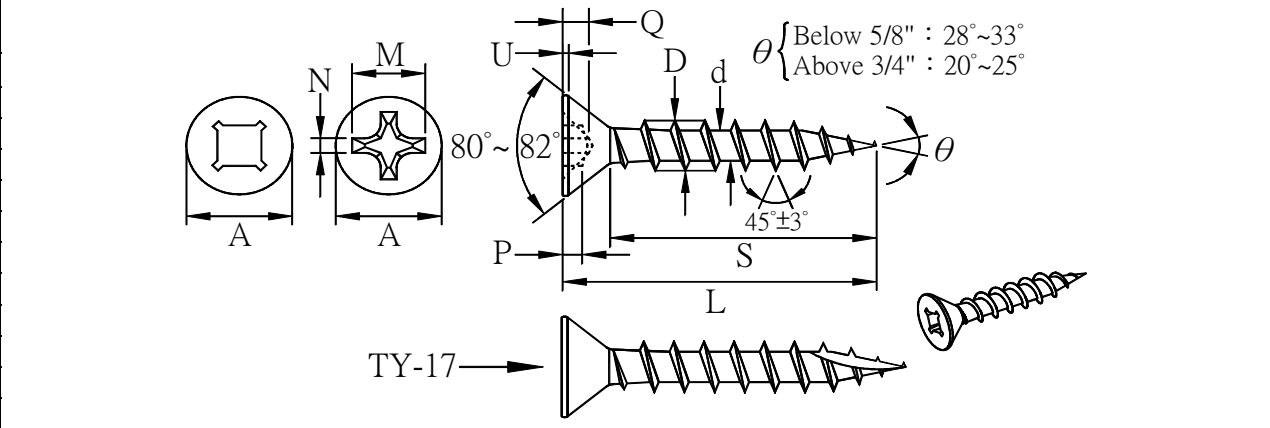


DW#	B1-QS11i	PQ1/PQ2/PH2 - FLH - QS45/17QS	Revision Record
-----	----------	-------------------------------	-----------------

Part No.	SIZE	S		L	
		Inch	mm	Inch	mm
	#6x1/2"	Full	Full	0.46"-0.50"	11.7~12.7
	#6x5/8"	Full	Full	0.58"-0.63"	14.8~15.8
	#6x3/4"	Full	Full	0.70"-0.75"	17.8~19.0



Unit	Size/ Thrds	A	M	N	U	Gauge						D	d	Wire	Torque
						PH-SQ Combo		PH-SQ Combo		Phillips					
						Recess	P	Recess	P	Recess	Q				
Inch	#6-13	0.260"	Min.	Min.	0.016"	#1	0.065"	#2	0.065"	#2	0.095"	0.141"	0.088"	0.099"	18
mm		0.248"	0.161"	0.029"	0.003"	#1	0.057"	#2	0.057"	#2	0.072"	0.135"	0.078"	0.099"	18
		6.60	Min.	Min.	0.40	#1	1.65	#2	1.65	#2	2.41	3.58	2.21	2.50	21
		6.30	4.09	0.74	0.10	#1	1.45	#2	1.45	#2	1.83	3.45	2.00	2.50	kgf.cm

UNIT: mm

**Specifications**

Material: SAE C1018 / C1022

Recess: #1/#2 PH-SQ Combo / #2 Phillips

Head: Flat head

Thread: 45° Thread / 45° Thread+TY-17

Heat Treatment: Surface Hardness: HV450~800 ; Core Hardness: HV320~450 ; Bending Angle: > 15° Breaking

Surface:

- Bright Brass
- Anti-Brass(Coffee)
- Copper Bronze
- Dark Oil Rub Bronze
- Dry Black Phos 48HR
- Chrome
- Satin Nickel
- Dry+Lube
- Zinc
- Black Zinc+Passivated
- Satin Zinc-Nickel

Customer approve: w/date	
Approved by : w/date	
CAD by : w/date	Steven Huang 2017.3.7
Issued date :	2017.3.7 year - month - day