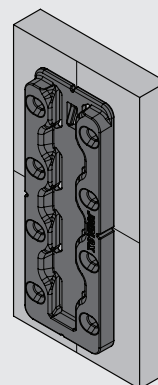


Material	High Strength Reinforced Nylon
Colour	Black
Fixing Method	8G Screws (8x) or Glue

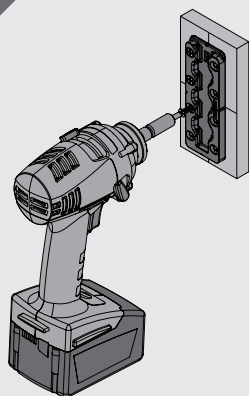
Flush Mounting

1



Mark center lines, vertical and horizontal, on both substrates. Flush mounting requires no additional preparation. Line the notches in each component (Hook shown here) with the center lines. **Mark-Out Template** can also be used.

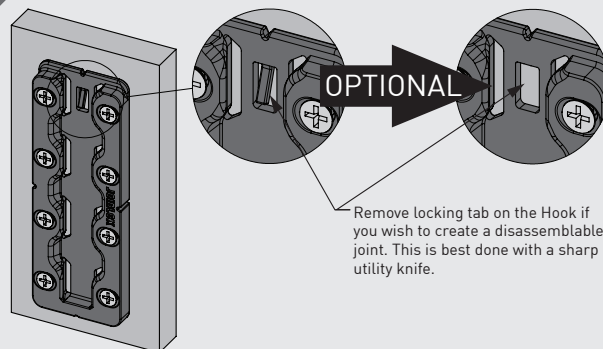
2



Striplox Liquidlox
can also be used for
mounting the Pro 55.

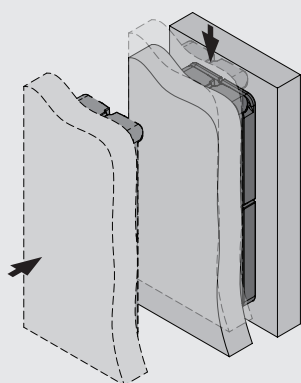
Hold the component in place and fasten to the substrate with 8 x 8G screws. Repeat for matching component. Ensure sufficient screw embedment in substrate.

3



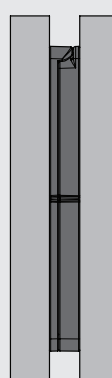
Prior to assembly, establish whether the joint is to be permanent or disassemblable.

4



Assembly the joint remembering the Pro 55 only needs to travel 1 pitch for full engagement.

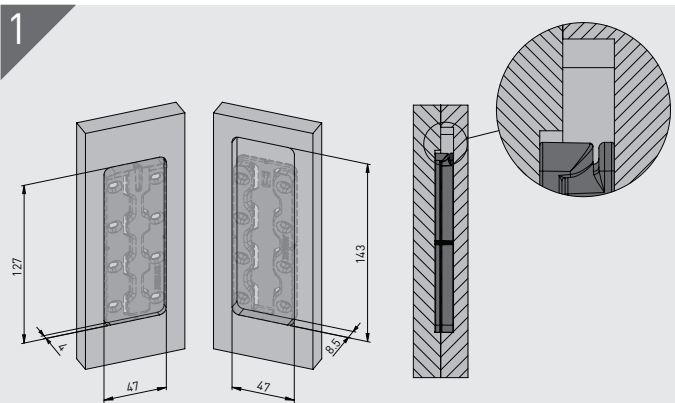
5



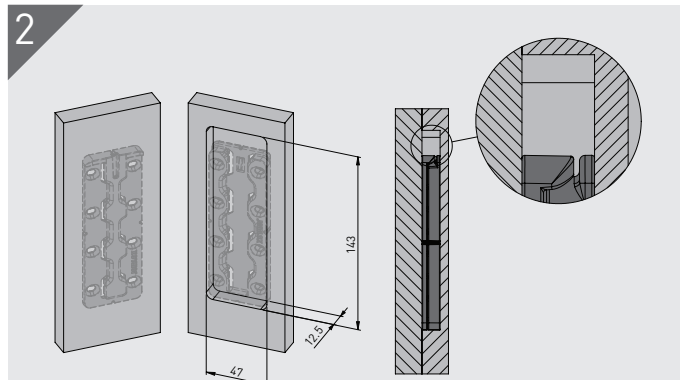
See second page for
Rebate and **Set-Back**
mounting options.

When assembled, the substrates will be separated by the thickness of the engaged Pro 55.

Rebate Mounting

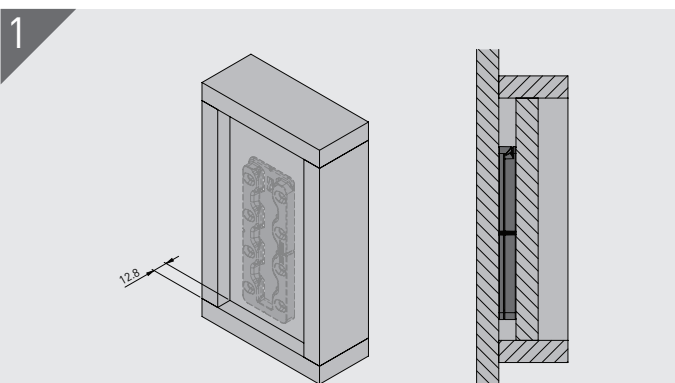


Part Rebate - each substrate mounting face is rebating as shown. Ensure sufficient screw embedment in substrate.



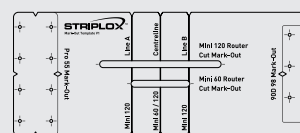
Full Rebate - 1 of the substrate mounting faces is rebating the full depth as shown. Ensure sufficient screw embedment in substrate.

Set-Back Mounting



Setting back the mounting face of either the Hook (as shown) or Key by 12.8mm results in a concealed joint without the need to cut rebates.

Installation Aids



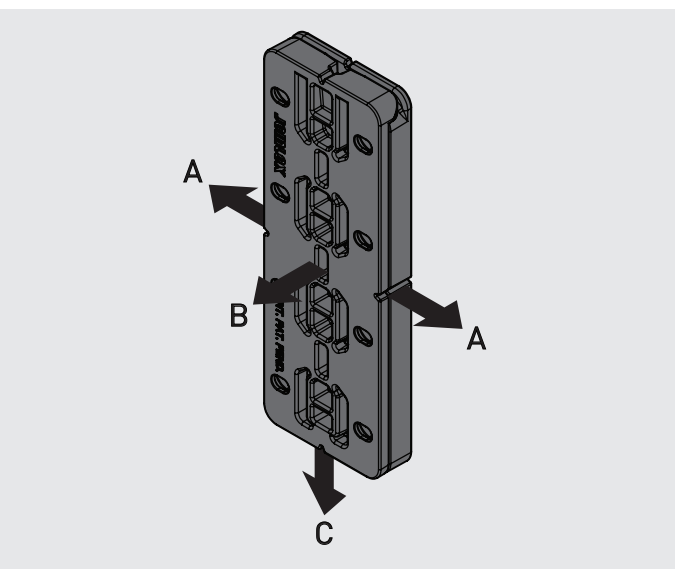
Striplox Mark-Out Template
Developed to aid in the installation of the Striplox Pro 55, 90D 98, Mini 60 and 120.



Striplox Liquidlox
Instant adhesive with a 15 second cure time. Liquidlox delivers a strong and reliable connection between Striplox products and most substrates.

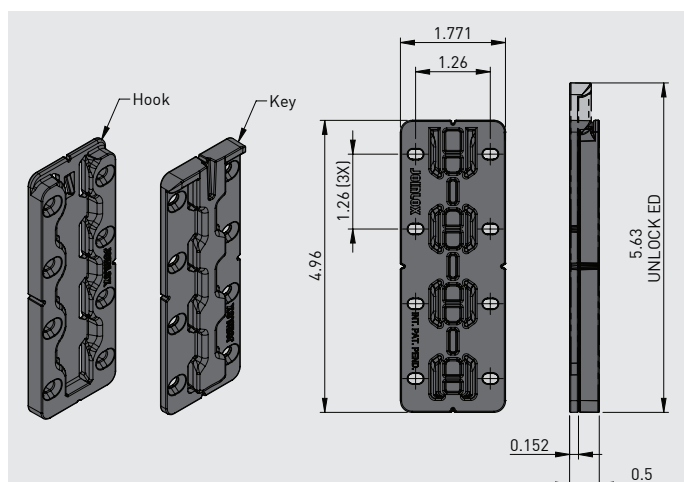
Visit joinlox.com/striplox or call 1800 JOINLOX to find out more about these installation aids.

Load Capacity



Direction	Indic. Load Capacity
A	200 kg
B	106 kg
C	200 kg

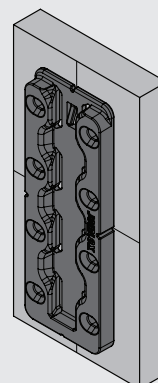
- Tested using particle board and fixed with screws.
- Ensure sufficient screw embedment in substrate.



Material	High Strength Reinforced Nylon
Colour	Black
Fixing Method	8G Screws (8x) or Glue

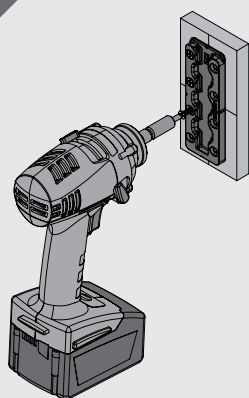
Flush Mounting

1



Mark center lines, vertical and horizontal, on both substrates. Flush mounting requires no additional preparation. Line the notches in each component (Hook shown here) with the center lines. **Mark-Out Template** can also be used.

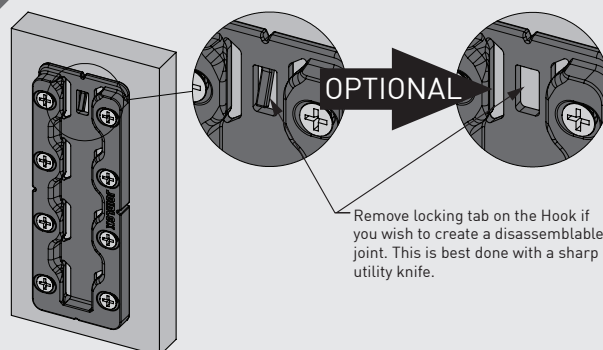
2



Striplox Liquidlox
can also be used for
mounting the Pro 55.

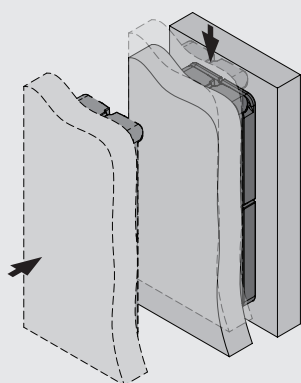
Hold the component in place and fasten to the substrate with 8 x 8G screws. Repeat for matching component. Ensure sufficient screw embedment in substrate.

3



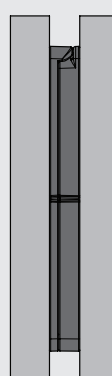
Prior to assembly, establish whether the joint is to be permanent or disassemblable.

4



Assembly the joint remembering the Pro 55 only needs to travel 1 pitch for full engagement.

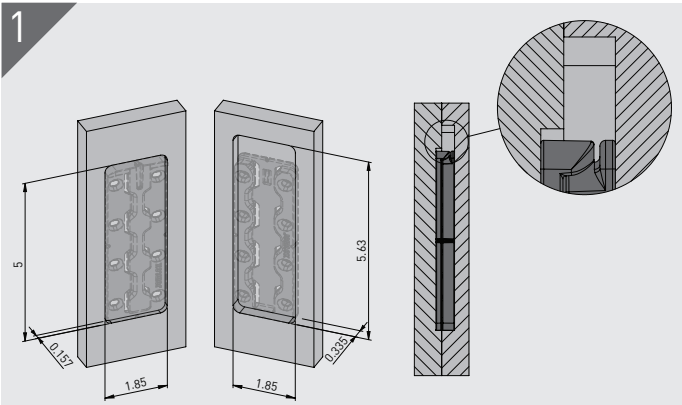
5



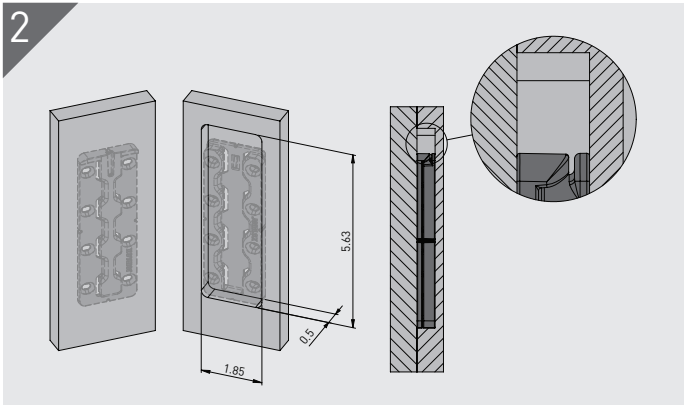
See second page for
Rebate and **Set-Back**
mounting options.

When assembled, the substrates will be separated by the thickness of the engaged Pro 55.

Rebate Mounting

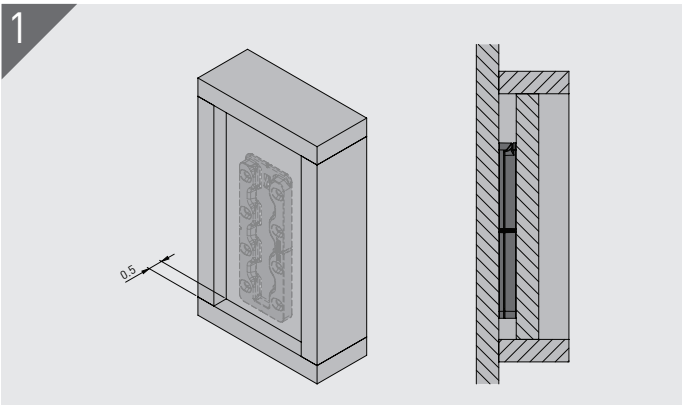


Part Rebate - each substrate mounting face is rebating as shown. Ensure sufficient screw embedment in substrate.



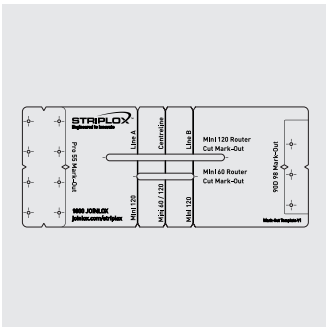
Full Rebate - 1 of the substrate mounting faces is rebating the full depth as shown. Ensure sufficient screw embedment in substrate.

Set-Back Mounting



Setting back the mounting face of either the Hook (as shown) or Key by 0.5" results in a concealed joint without the need to cut rebates.

Installation Aids



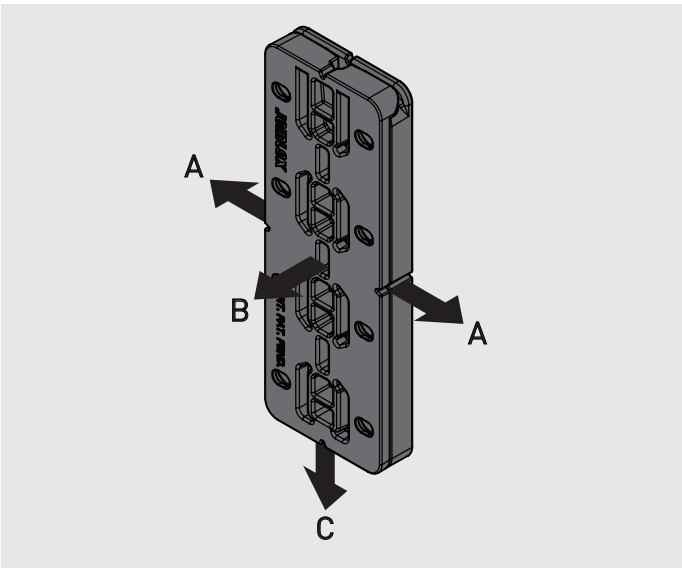
Striplox Mark-Out Template
Developed to aid in the installation of the Striplox Pro 55, 90D 98, Mini 60 and 120.



Striplox Liquidlox
Instant adhesive with a 15 second cure time. Liquidlox delivers a strong and reliable connection between Striplox products and most substrates.

Visit joinlox.com/striplox or call 1800 JOINLOX to find out more about these installation aids.

Load Capacity



Direction	Indic. Load Capacity
A	440 lb
B	233 lb
C	440 lb

- Tested using particle board and fixed with screws.
- Ensure sufficient screw embedment in substrate.